

CARTS

CARTS/MATERIAL HANDLING



220780*

Bellman's/Luggage Carts

Ex-cell Economy

Economical, sturdy cart ideal for the budget-minded facility. Sturdy 18-gauge chrome tubular steel frame. 3/4" carpeted plywood deck with full wrap-around black bumper. Ample 750 lbs capacity. 5" grey casters. 68.6 lbs.

220780* 780EC, 43"w x 23"d x 68"h

Forbes™ H1210-5C

Chrome plated superstructure, carpeted deck, full wrap-around vinyl bumper, 5" grey non-marking wheels.

221210* 37"l x 18.5"w x 64.5"h

Forbes™ 2430

Superstructure is silver powder-epoxy; Standard wheels are 5" grey non-marking.

222430* 35.5"l x 19.5"w x 61.5"h



221210*



Forbes™ 1550B Bellman's Hand Truck

Stainless steel frame with a brushed finish and bumpered or carpeted dropnose and verticles. 19"w x 45.5"h x 24"l.

221550B* bumpered dropnose

221550CK* carpeted dropnose

Forbes™ Birdcage™ 2425/2421

This version is fitted with push bars and is carpeted in burgundy, one of eight color choices. For a softer ride over brick, tile, and other uneven floors, this cart features 8" full pneumatic wheels with brass plated rims and caster forks. 43"l x 24"w x 78"h

222425* w/solid brass skirt

222421* w/o solid brass skirt



222425*



1-800-733-1748
www.missionjanitorial.com

Mission
JANITORIAL & ABRASIVE SUPPLIES

Housekeeping Carts

Rubbermaid® X-tra™ Housekeeping Carts

Versatile, functional and sized to accommodate the needs of various environments while featuring commercial grade molded construction with 8" non-marking wheels. Standard equipment includes vinyl bag, bumpers, vacuum holder and under deck shelf. Full size cabinet offers exceptional storage space and optional adjustable middle shelf. Doors are optional.

226189 6189 Full Size Cart w/vinyl bag, bumpers, vacuum holder and under deck shelf, 60"l x 22"w x 50"h, 102lbs

226191* 6191 Same as 6189 w/doors, 109lbs

226190* 6190 Compact Cart w/vinyl bag, bumpers & vacuum holder, 49"l x 22"w x 50"h, 95lbs

226192* 6192 Same as 6190 w/doors, 102lbs

226198* 6198 Restock and Service Cart, 38"l x 22"w x 50"h, 82lbs

229919* 9T19 Full Size Housekeeping Cart w/doors, vinyl bag, bumpers, vacuum holder, under deck shelf and hood



226198



226190



226189

Accessories:

226193* 6193 Vinyl Replacement Bag w/zippered side opening. Fits: 6189, 6190, 6191, 6192, 6/cs

226195* 6195 Adjustable Shelf Kit, fits: 6189, 6190, 6191, 6192, 6198, 30-1/8"l x 18-1/2"w x 2-1/4"h, 5lbs

226196* 6196 Under Deck Shelf Kit, fits: 6189, 6190, 6191, 6192, 6198, 25-3/8"l x 21"w x 6-11/16"h, 2.5lbs

226197* 6197 Locking Door Kit, fits: 6189, 6190, 6191, 6192, 6198, 6.7lbs

226199* BR6199 Utility Drawers w/Lock, fits: 6189, 6190, 6191, 6192, 6198, brown, 4.5lbs

223353* 3353-88 Refuse Bin, fits: 6190, 6192, 6198, 22"h x 17"w x 12"d, 8gal, black, 9lbs

223354* 3354-88 Utility Bin fits 6190, 6192, 6198, 10-1/2"h x 17"w x 12-1/8"d, 4gal, 5.4lbs

229900* 9T00 Protective Security Hood fits: 6189-6192, 6198, 9T19 and 9T20

229902* 9T02 9 Pocket Organizer Caddy Bag fits: 6189-6192, 6198, 9T19 and 9T20

229905* 9T05 Brochure Caddy fits: 6189-92, 6198, 9T19 and 9T20



223353 &
223354 (Bins)



226193

Forbes™ H1000

Features two shelves in a 19"d x 30"w x 30"h steel cabinet with a 2.5" deep top tray, two low-profile tubular handles, reinforced base, bumpered ends, 8" non-marking wheels. Shown with brown nylon bags, order #19NL.

221000*



Forbes™ 2104

30"w x 36"h Steel cabinet with 2.5" deep top tray; three shelves; tubular steel low-profile handles; two end platforms; full wrap-around bumper; 8" black ball bearing wheels.

222104* 58"l x 21"w x 47"h



CARTS

CARTS/MATERIAL HANDLING



Forbes™ H3510

Two shelves in a 19"d x 30"w x 33"h plastic cabinet with a 2" deep top tray, two low-profile tubular handles, 3" deep drawer, reinforced square tube base, full wrap-around vinyl bumper, 8" grey wheels shown with burgundy poly-vinyl bags, order #42BU.

223510* 56"l x 20.5"w x 43.5"h

Janitor Carts

Rubbermaid® Janitor Cart

Carefully designed hooks and shelves keep all the tools of the trade organized and convenient. Optional locking compartment for extra security. Rolls easily over thresholds. Flexi 2000 cleaning cart's front platform also holds a 32 gallon Brute® container.

226173 6173 Janitor cart w/bag

226181 Locking compartment for 6173

226182 Flexi 2000 cleaning cart

226158 25 gallon vinyl bag
(use 33 x 39 can liner)



226182



226173

Luggage Racks

Ex-cell Hospitality Design Series

Metal folding luggage racks are made of heavy-gauge 1" tubular steel used in hotels worldwide. Sturdy washable straps. Plastic feet protect floors. Available in 7 different finishes and 5 straps options. Model 752 has 2 back straps to prevent small luggage from falling through back rest.

220750* 750 Standard, 26"w x 16"d x 20"h

220752* 752 Rack with 2 back straps,
25.5"h x 16"d x 27"h



Forbes™ Luggage Racks

These unique solid Oak luggage racks create a warm atmosphere for any room. Has the same cross bracing as model 932 and is available in 3 finishes (Light, Medium and Dark). 24"l x 15.5"w x 20"h

220932* w/ back bar

220934* w/o back bar



Laundry Carts

Ex-cell Laundry Caddy™

Hamper/cart maneuvers easily on 3" double ball-bearing casters. 6 bushel capacity white cotton duck bag. Chrome frame, 24.5"w x 21.25"d x 35"h.

220460* 460WCHR



Meese Bulk Truck

This poly construction bulk truck offers 48ft³/38 bushel capacity, 6" rubber casters, available non-nesting lower cutout area and optional closure panel. 48"l x 28-1/2"w x 59"d (66-1/2" overall height). Call for other size availability.

220072* 72P



1-800-733-1748
www.missionjanitorial.com

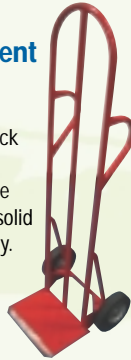
Mission
JANITORIAL & ABRASIVE SUPPLIES

Material Handling Equipment

Gamco 102 Hand Truck

This high carbon tubular steel hand truck is designed with practical double-loop handles for a quick and convenient sure grip. Features beveled 8" toe plate, 8" solid rubber wheels and 500lbs load capacity.

220102* 12-1/2"w x 55"h



Rubbermaid® Heavy-Duty Polyethylene Dollies

Extremely versatile and can perform a wide variety of material handling applications and environments. Durable, one-piece molded polyethylene decks are lightweight and easy to clean. Sturdy plastic construction, easily rolling, 4" non-marking swivel casters. Corrosion resistant, powder coated steel reinforced frame for added strength. 1" thick rubber end pads on 9T55 protects load and minimizes slippage. 1,000lbs capacity. Red

229954* 9T54 Flush Deck Dolly, 30"l x 18"w

229955* 9T55 Padded Deck Dolly, 30"l x 18"w

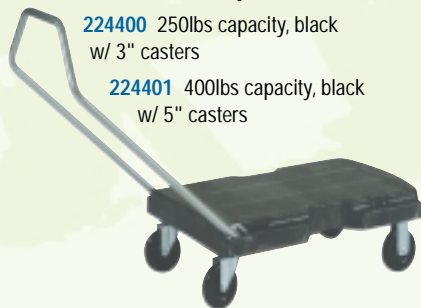


Rubbermaid® Home and Office Cart

Reduce lifting and unsafe carrying of heavy loads. Transport large bulky loads efficiently. Durable structural foam deck won't rust, dent or bend. Non-skid surface helps prevent load shifting. Three position handle lets users push, pull or fold flat for use as a dolly. 32-1/2"l x 20-1/2"w.

224400 250lbs capacity, black w/ 3" casters

224401 400lbs capacity, black w/ 5" casters



Rubbermaid® Platform Trucks

Sturdy structural foam construction won't rust, dent, chip, peel, or splinter, 2 crossbar models also available.

224406* 4406 Standard Platform Truck, 36"l x 24"w, 1000lbs capacity

224436* 4436 Standard Platform Truck, 48"l x 24"w, 1000lbs capacity

224466* 4466 Standard Platform Truck, 60"l x 30"w, 1000lbs capacity



Rubbermaid® Tilt Trucks

Seamless body is easy to clean and will not pit or corrode. Lightweight, durable, and easy to maneuver. Lids optional.

221304 300lbs capacity, 1/2 cubic yard, 56-3/4" x 25" x 38-5/8"h, grey

221307* Lid for 1304

221314 750lbs capacity, 1 cubic yard, 72-1/4" x 33-1/2" x 43-3/4"h, grey

221317* Lid for 1314



Rubbermaid® Cube Trucks

Make efficient work of commercial waste collection and material transport. Metal frame design provides durable support. Spring platform option brings contents to a convenient working level, allowing safe and less fatiguing handling of material. Optional domed, hinged lid conceals loads without affecting capacity.

224614* 4614 14 ft³, 500lbs, 44-1/8"x31"x32-1/2"

224616* 4616 16 ft³, 500lbs, 43-3/4"x31"x37"

224618* 4618 Spring Platform, 20 ft³, 600lbs, 48"x34-1/8"x36-1/2"

22130506* 1305-06 Bulk Collection Tilt Truck "We Recycle", 60-1/2"l x 28"w x 38-5/8"h, 750lbs cap, dark blue

22461606* 4616-06 Cube Truck "We Recycle", 43-3/4"l x 31"w x 37"h, 500lbs cap, dark blue



CARTS

CARTS/MATERIAL HANDLING



Rubbermaid® Structural Foam Tilt Trucks

Designed for general refuse collection and medium material handling. Fits through standard commercial doorways and onto elevators easily. Constant force design allows for controlled dumping by one person, while "steering wheel" handle provides excellent maneuvering capability.

64-1/2"l x 30-1/4"w x 38"h

221011* 1011 Utility Duty, 400lbs cap, 92lbs

221013* 1013 Standard Duty, 800lbs cap, 101lbs

221028* 1028 Domed Lid, 24.8lbs

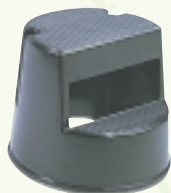
Ladders & Step Stools

Rubbermaid® Heavy Duty Step Stool

This step stool glides easily with its retractable rubber caster. The non-skip bottom ring gives you a stable, steady base to work from.

Step-stools are 16"d x 13"h.

802523BG Beige



Fiberglass Ladder

Extra heavy-duty fiberglass construction, 6-foot single-sided step ladder. Type 1A 300lbs. Rated.

452022*



Utility Carts

Rubbermaid® Utility/Service Cart

Versatile, functional carts for easy transportation. Quiet casters and plastic construction help eliminate added noise unlike some metal carts. Two convenient handles.

224531* 4531 Utility Drawer Cart, 45-1/4"l x 25-7/8"w x 33-1/4"h, 500lbs cap

223355* 3355 Utility Cart w/enclosed end panels, 31"l x 18"w, 37-1/2"h, 300lbs cap, 37.4 lbs, beige

223424* 3424-88 Utility Cart w/4" swivel casters, brushed aluminum uprights, 33-5/8"l x 18-5/8"w x 37-3/4"h, 200lbs cap, 30lbs, black

223457* 3457 Utility Cart w/Locking Doors, sliding drawer and 4" dia swivel wheels, 33-5/8"l x 18-5/8"w x 37-3/4"h

223353* 3353-88 Refuse Bin fits: 3355, 3421, 3454-88, 22"h x 17"w x 12"d

223354* 3354-88 Utility Bin fits: 3355, 3421, 3424, 10-1/2"l x 17"w x 12-1/8"d

224590* 4590 3-Outlet Surge Protected Power Strip

224591* 4591 Hook Kit (set of 4)

224593* 4593 Single Drawer (fits 4520-88, 4546)



223424

Rubbermaid® Heavy-Duty Platform Truck & Wagons

Features large-capacity, tough structural foam construction with steel support. Won't rust, dent or splinter like some metal and wood platform trucks. Virtually maintenance-free. Crossbar handle helps maneuver loads easily. A rear hitch allows for training of several wagons together and eliminates multiple trips. Optional side panel package for increased load capacity. 70"l x 40"w. 126.5lbs.

229911* 9T11, Platform Truck w/6" rubber casters, 1000lbs cap

229912* 9T12, Platform Truck w/8" pneumatic casters, 1000lbs cap

229921* 9T21, Platform Truck w/8" polyolefin casters, 2000lbs cap

229909* 9T09, Side Panel Package, 55.85lbs



1-800-733-1748
www.missionjanitorial.com

Mission
JANITORIAL & ABRASIVE SUPPLIES



Rubbermaid® Trades Cart

Moves productivity right to the work site – a total storage and mobile workbench system features: four compartmentalized boxes to store assorted parts and hardware; a fully enclosed, lockable storage compartment helps keep tools and materials secure; two storage bins hold essential hand tools and supplies; and a flat surface at ergonomic height provides convenient work area.

226180* 6180 Trades Cart w/6" casters, 38"l x 16-1/4"w x 33-3/8"h

Rubbermaid® TradeMaster™ Mobile Cabinets & Work Centers

Durable structural foam construction. Low maintenance: rust, dent and chip resistant. Comfort grip, ergonomic handle. Molded-in compartments for small parts or tools. Molded-in cup holder. 3 outlet, surge protected power strip/cord wrap with 15' cord. 5" non-marking casters, 2 fixed & 2 swivel w/total lock brakes. 4" deep, steel drawers with molded-in handles. Full extension, ball bearing drawer slides. Single key lock secures all drawers and allows one drawer to open at a time. Doors open 270°. 2 adjustable shelves in 4532. 1 adjustable shelf in 4533 and 4548. Black.

224512* 4512 2-Door Cabinet, small, 41"l x 18"w x 38"h, 500lbs cap

224513* 4513 4-Drawer Cart, 40"l x 18"w x 38"h, 500lbs cap

224532* 4532 2-Door Cabinet, large, 49"l x 26"w x 38"h, 750lbs cap

224533* 4533 4-Drawer & Cabinet, small, 49"l x 26"w x 38"h, 750lbs cap

224534* 4534 8-Drawer Cart, 48"l x 26"w x 38"h, 750lbs cap

224535* 4535 Professional Contractor's Cart, 53"l x 26"w x 38"h, 500lbs cap

224548* 4548 4-Drawer & Cabinet, large, 59"l x 26"w x 38"h, 750lbs cap

Rubbermaid® 5-Drawer Mobile Work Center

Mobile work center's locking bar provides security for tools while the heavy-duty work surface supports up to 250lbs. Casters provide portability and are lockable for safety. Peg board side panels provide convenient tool organization. Built-in cord wrap allows neat and convenient storage of power tools and work lights. 37-5/8"l x 19-15/16"w x 33-1/2"h, 69lbs.

227734*



Rubbermaid® Two Shelf Heavy Duty Utility Cart

Heavy duty material handling carts complete with casters, handles and tough, smooth Duramold construction. Won't rust, dent, chip or peel. 400 pound total capacity, 200lbs per shelf.

224500 4500-88, 16"x30"x32-1/4"h, grey

224520 4520-88, 24"x36"x32-1/4"h, grey



224500

Rubbermaid® Flat Shelf Carts

Versatile flat shelves designed to transport oversized, bulky items. Mobile ESD Utility Cart features a molded-in electrostatic dissipative capability.

224505* 4505 Flat Shelf Cart, 37-7/8"l x 19-3/16"w x 33-5/16"h, 200lbs cap per shelf, grey

224525* 4525 Flat Shelf Cart, 43-7/8"l x 25-5/8"w x 33-5/16"h, 200lbs cap per shelf, grey

22450545* 4505-45 Mobile ESD Utility Cart, 37-7/8"l x 19-3/16"w x 33-5/16"h, 150lbs cap per shelf, black



224525



22450545



224533